

TIPS & TALES

2929 3rd Ave N. | Escanaba | MI 49829
7126 Co 426 M.5 Rd | Escanaba | MI 49829
3700 10th Street | Menominee | MI 49858

906-789-6400 | 888-791-6420
906-786-2732 | 888-547-2732
906-863-5382



Grow Your Savings with PFCU!

Visit our website or stop in to see what certificate specials we are currently offering, as well as our other great savings rates!

NEW!

ScoreCard Cash Back VISA Rewards Card

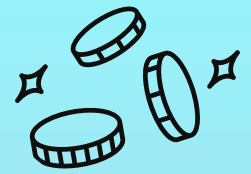
Members can now earn 1.5% Cash Back on ALL purchases! Visit our website or talk with a Member Service Representative today to find out how you can start earning!

1.5%

ScoreCard[®]
CASH BACK
ALL
PURCHASES!
VISA[®] Rewards Card

Cash Back must be redeemed by member. These ScoreCard Rewards cannot be combined with rewards from other Scorecard Cards. Rewards expire 60 months from the date they are earned. Subject to credit approval.

Youth Month Recap



Youth Month was a **ROARING** success! Our Youth Members definitely embraced this year's theme of "Unleash the Power of Saving."

- 32 NEW Youth Accounts opened
- Over \$120,000 in Youth Deposits
- \$1,100 awarded to Youth Members
- 28 Youth Members won prizes

2023 Scholarship Recipients



Daniel Smith



Gabrielle Lacosse

Summer Food Truck Days



Summer Food Truck Days are happening at Peninsula Federal Credit Union! Check out our tentative schedule and stop by for some delicious lunch!

Teen Financial Education Nights

Teen Financial Education Nights took place at PFCU through the month of March. We had a total of 36 attendees!



Financial Reality Fairs



PFCU along with other local businesses and financial institutions put on financial reality fairs at local high schools to help students better understand income, cost of living, and budgeting.

Credit Union Stats

Account Type	APY*
Regular Shares*	.35%
Share Draft Checking*	.15%
HSA*	.15%
IRA Shares*	1.90%
Money Market < \$10,000**	.35%
Money Market \$10,000-\$24,999**	1.80%
Money Market \$25,000-\$49,999**	1.95%
Money Market \$50,000-\$499,999**	2.10%
Money Market > \$500,000**	2.25%

Assets: \$285,850,765
Loans: \$235,217,960
Deposits: \$257,401,797
Members: 14,601

Rates are declared by the Board of Directors and paid quarterly from available earnings. Rates are subject to change. *APY= Annual Percentage Yield

*Dividend rate may change after the account is opened.
 **A minimum daily balance of \$2,500.00 must be in the account to avoid a low balance fee, fee may cause loss of principal balance.
 Fees may reduce earnings.
 Federally insured by the NCUA.
 HSA - Individual accounts only

People Helping People

